



MONTHLY MEMBERSHIP PROGRESS REPORT

District 132

Results as of: 3/31/2017

GMT: MIKLOS HORVATH

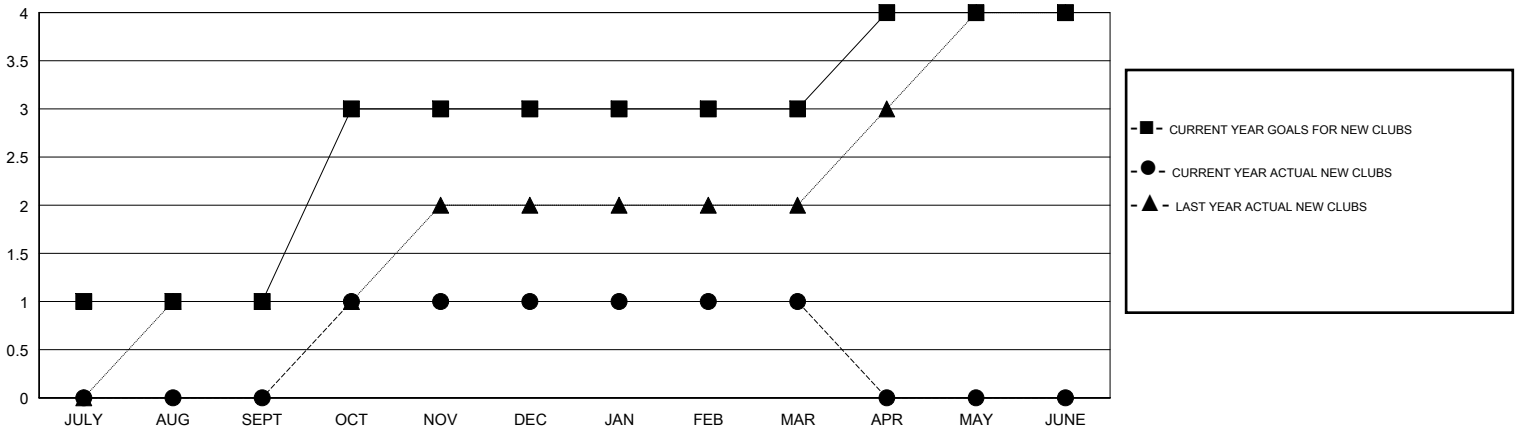
LOCATION MACEDONIA (FYROM)

GMT CA

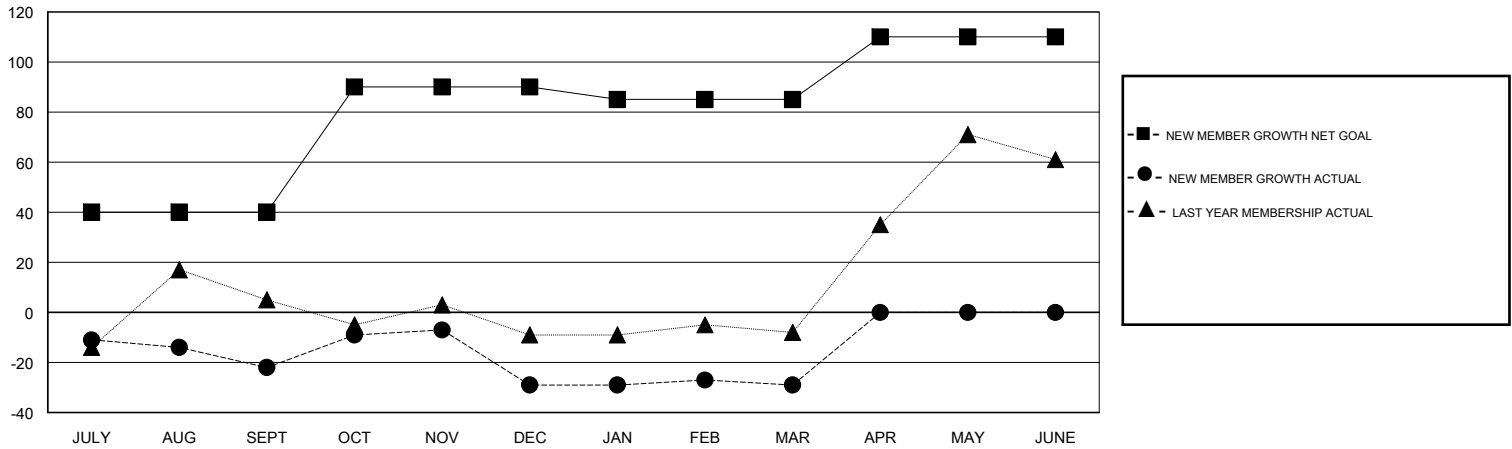
Clubs			
RESULTS FOR 2016-2017			
QUARTER	NEW CLUB GOAL	NEW CLUBS	DROPPED CLUBS
JULY/AUG/SEPT	1	0	0
OCT/NOV/DEC	2	1	1
JAN/FEB/MAR	0	0	0
APR/MAY/JUNE	1	0	0

Members			
RESULTS FOR 2016-2017			
QUARTER	NEW MEMBER GROWTH NET GOAL (not reinstated or transfers)	NEW MEMBER GROWTH ACTUAL (not reinstated or transfers)	DROPPED MEMBERS ACTUAL (including transfers)
JULY/AUG/SEPT	40	3	25
OCT/NOV/DEC	50	47	54
JAN/FEB/MAR	-5	30	30
APR/MAY/JUNE	25	0	0

GOALS AND ACTUAL NEW CLUBS CUMULATIVE



GOALS AND ACTUAL MEMBERS CUMULATIVE



DROPPED CLUBS: 1	19 CLUBS OF 38 ADDED 1 OR MORE NEW MEMBERS	GENDER DISTRIBUTION
		MALE 453 (56.20%)
		FEMALE 353 (43.80%)
DROPPED MEMBERS	CLICK HERE FOR CUMULATIVE MEMBERSHIP DATA	TOTAL FAMILY UNIT MEMBERS 94
DECEASED 0		FAMILY MEMBERS PAYING HALF DUES 48
CLUB CANCELLED 5		
OTHER 104		
TOTAL 109		